

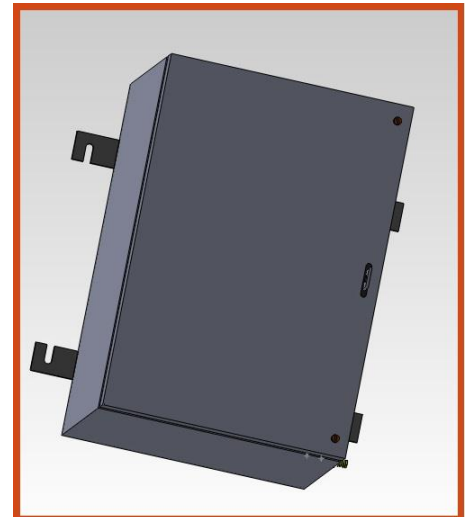
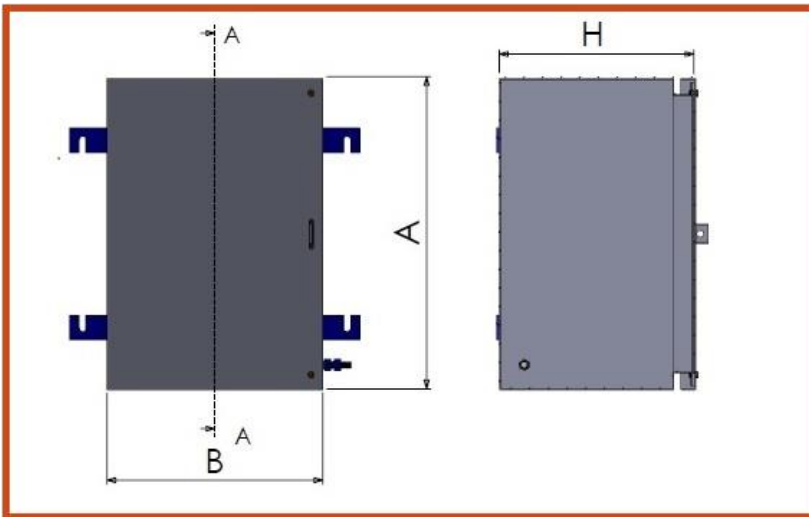


EJ SERIES EX-PROOF TERMINAL BOXES

ATEX CERTIFICATE: INSEMEX-OEC.ATEX.21.0301X

CE  II 2 G Ex eb ia II C T ... Gb

CE  II 2 D Ex tb ia III C T... Db



TYPE EJ...	A (mm.)	B (mm.)	H (mm.)	TYPE EJ...	A (mm.)	B (mm.)	H (mm.)
10	413	263	160	1A	116	116	91
11	425	263	145	1B	176	116	91
12	413	263	250	1C	223	116	91
13	425	373	160	1	123	123	80
14	425	373	250	2	250	153	75
15	523	373	250	3	153	153	75
16	574	373	195	4	153	153	120
17	640	450	250	5	253	153	145
18	720	550	170	6	293	263	160
19	760	550	250	7	305	263	195
20	880	640	250	8	376	263	170
21	1000	740	250	9	376	263	210

APPLICATIONS

EJ SERIES boxes are suitable for use in Zone-1, Zone-21, Zone-2 and Zone-22 ex-proof environments. It can be manufactured in desired dimensions up to 1100 volt.

MATERIAL

Steel / Stainless Steel

MECHANICAL PROTECTION TYPE

IP66